



Just one source.

E=ebner
engineering | manufacturing | establishing

**PLANTS
APPARATUS
ERECTION**

General Information

The following certifications and licenses are available in our company:

WHG



Chinastamp



General Information

The following certifications and licenses are available in our company:

ISO 9001



General Information

The following certifications and licenses are available in our company:

KTA



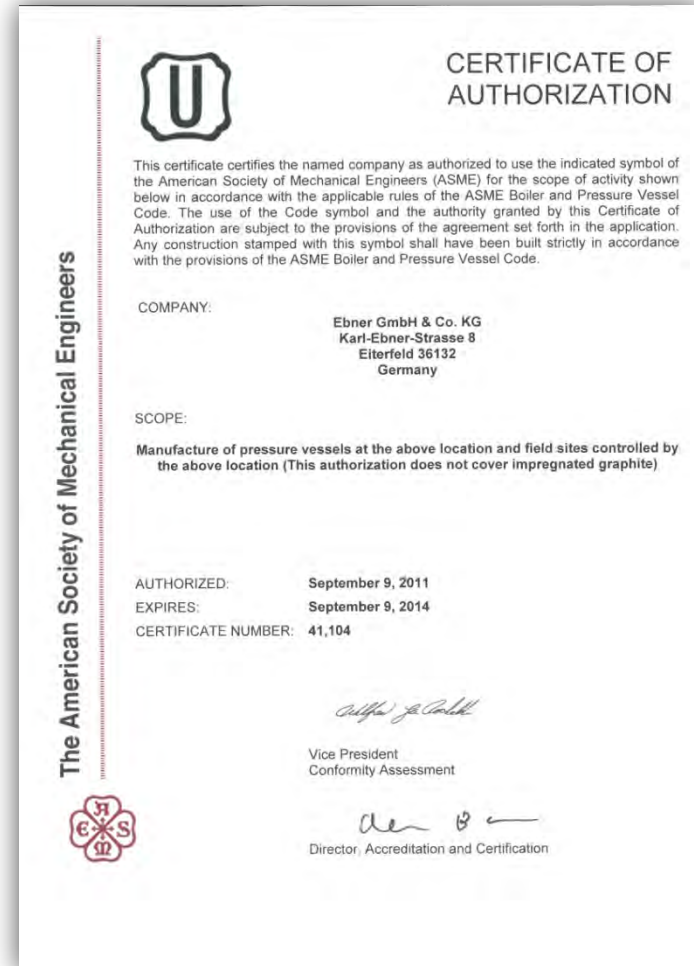
HP 0



General Information

The following certifications and licenses are available in our company:

U-STAMP



General Information

➤ Company founded in 1965 by Mr. Karl Ebner

➤ Managing Directors: Stefan Ebner

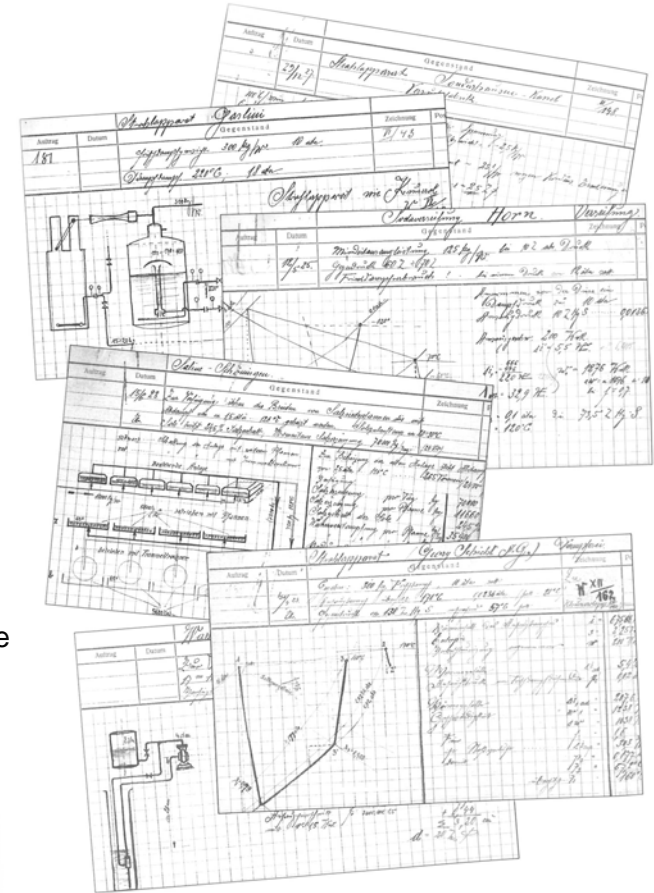
➤ The company is divided in 2 profit centers:

- Plant Construction
- Manufacturing of apparatus/erection

➤ Our offer to you:

- Customer Support
- Services
- Engineering
- Laboratory and Pilot plant

- Calculation
- Planning
- Design
- Manufacturing
- Erection / Start-up / After-sales service



General Information

Contact person



Stefan Ebner
Managing Partner
Sales Plant Technology
E-Mail: stefan.ebner@ebner-co.de
Tel: +49 6171 9282-0
Fax: +49 6171 9282-11



Rasit Özis
Authorized Officer
Head of Plant Technology Division
E-Mail: rasit.oezis@ebner-co.de
Tel: +49 6672 890-180
Fax: +49 6672 890-198



Josef Rübsam
Authorized Officer
Factory Manager
E-Mail: josef.ruebsam@ebner-co.de
Tel: +49 6672 890-119
Fax: +49 6672 890-133



Abel Markus
Authorized Officer
Commercial Manager
E-Mail: markus.abel@ebner-co.de
Tel: +49 6672 890-161
Fax: + 49 6672 890-139



Harald Schäg
Sales Manager
Apparatus
E-Mail: harald.schaeg@ebner-co.de
Tel: +49 6672 890-106
Fax: +49 6672 890-151

EBNER`s philosophy: Just one source.

Compared to other plant constructors we have:

- own basic- and detail-engineering
- own electric as well as process-, measuring- and control engineering
- own workshops and erection department

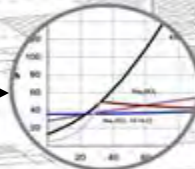
Plants

Turnkey plants
Own fabrication



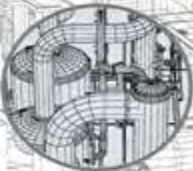
Engineering

Basic- and detail engineering
Electric-, process-, measuring- and control engineering



Designing

Auto-CAD
ACP



Apparatus

Strength calculation
Statics



Erection

with own personnel



Start-up and after Sales service



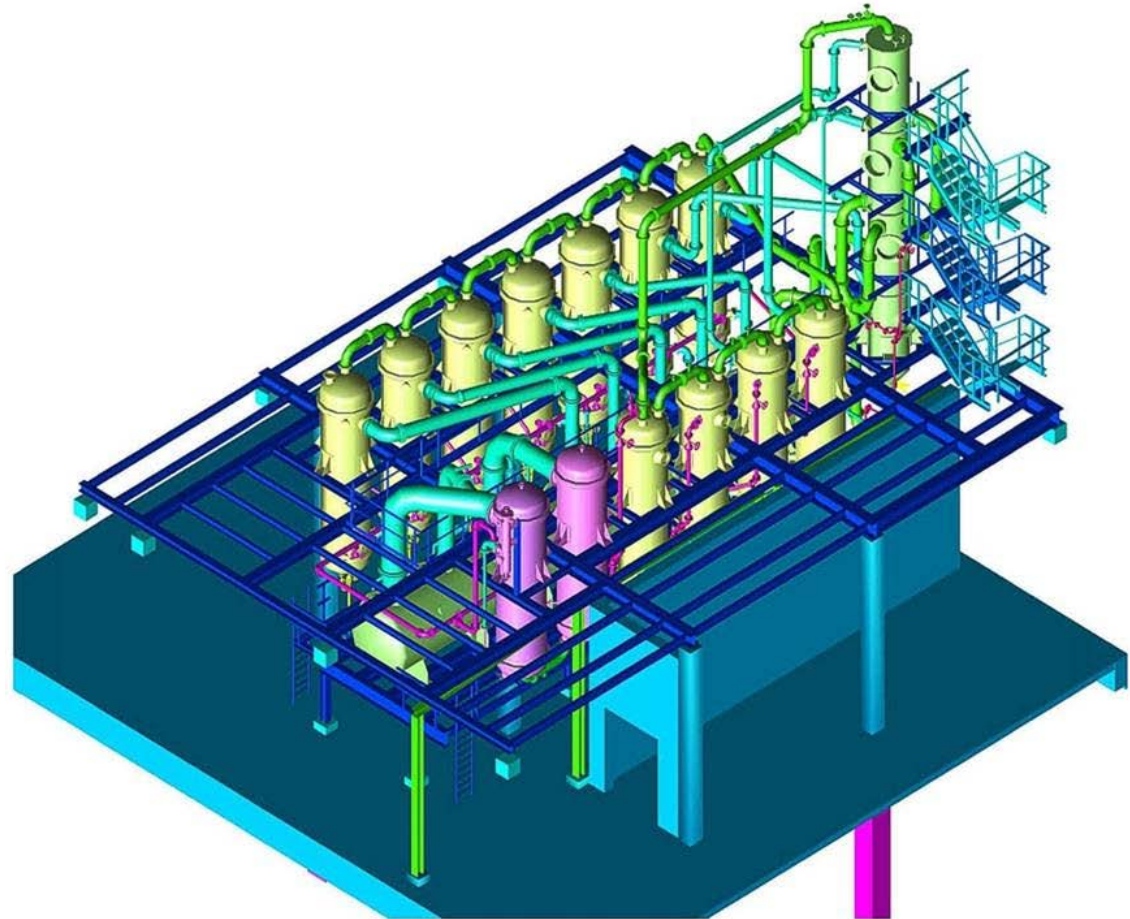
We stand for:

reliability, flexibility and overall competence

Company Profile

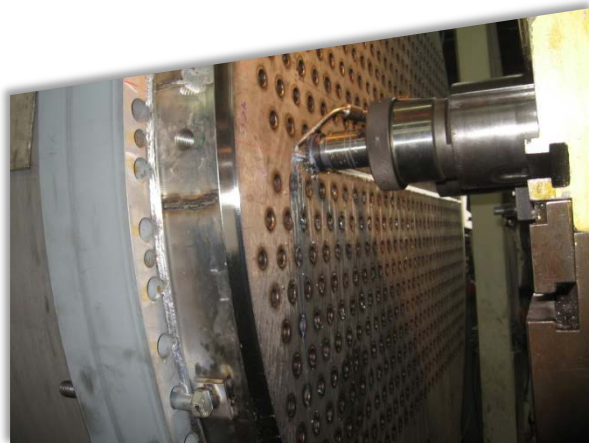
Design Systems:

- Auto-CAD 2011
- Auto-CAD P&ID
- Auto-CAD Plant 3D
- E-Plan 5.7
- E-Plan P8



Workshop equipment

- CNC-drilling machine
- CNC-milling machine
- Saws
- Grinding machine (e.g. belt grinding machine)
- Sheet processing machine (e.g. nut beveling machine, plate shear)
- Sheet roller
- Presses
- Machine tools (e.g. turning lathes, milling machines)
- Work-holding and welding devices (e.g. welding trestle, roller blocks)
- Crane and handling devices (e.g. indoor crane, fork lift)
- Electric welding
- Metal protective gas welding (MAG)
- Protective gas welding (WIG)
- Plasma needle hole welding machine
- Tube welding machines (WIG, MAG)
- Automatic welding skid for circular weld seams
- Other welding devices (e.g. exhaust systems)



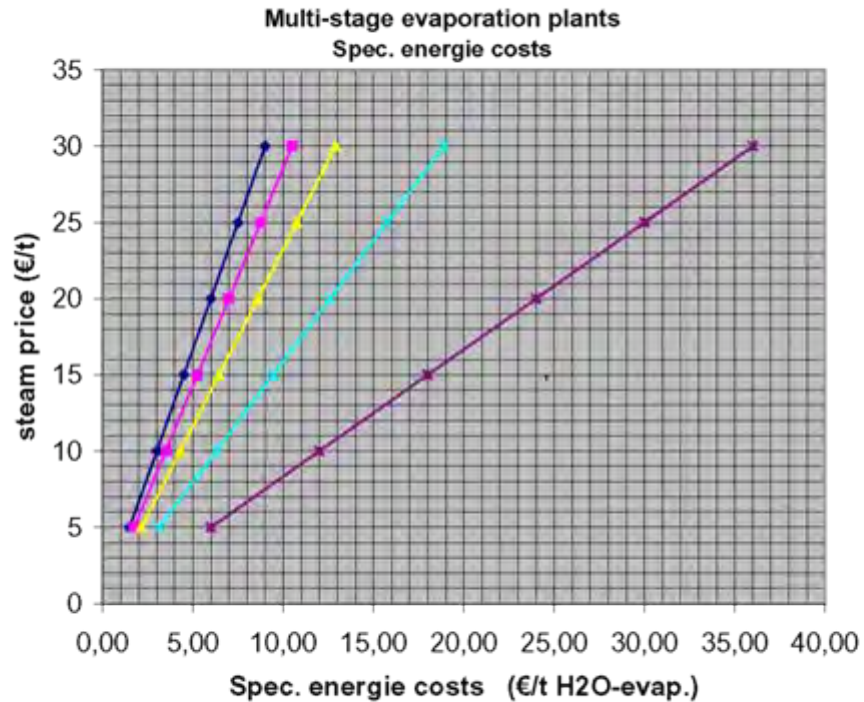
Our Clients

Companies of different branches of industries worldwide belong to our clients:

- Chemical Industry
- Galvanic Industry
- Plant Construction
- Engineering Companies
- Potassium Industry
- Power Plants
- Detergent Industry
- Refuse Incineration
- Pharma Industry
- Steel-and Rolling Works
- Viscose Fibre Industry

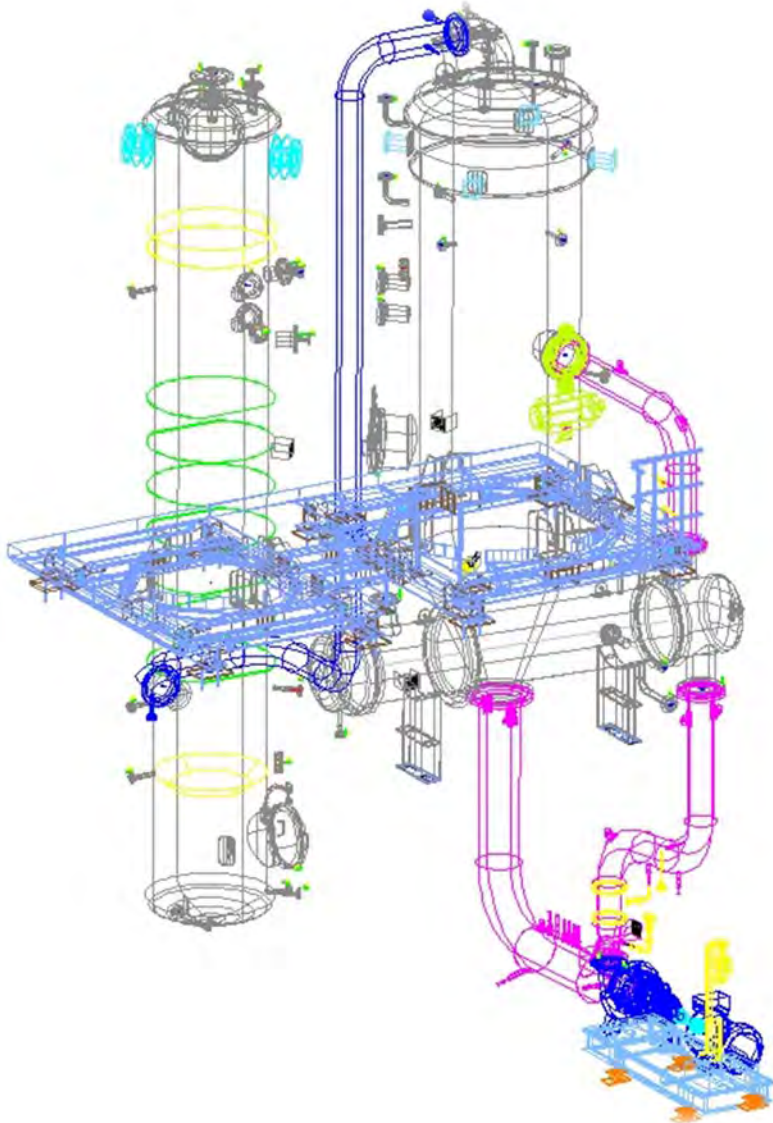
Engineering and Designing

Basic Engineering such as:



- feasibility studies
- optimization studies
- process technical calculation of apparatus and plants
- preparation of process flow sheets
- preparation of mass- and energy balances
- electrical-,measuring- and control systems
- preparation of installation plans

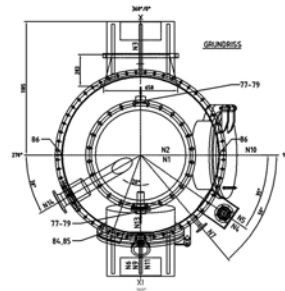
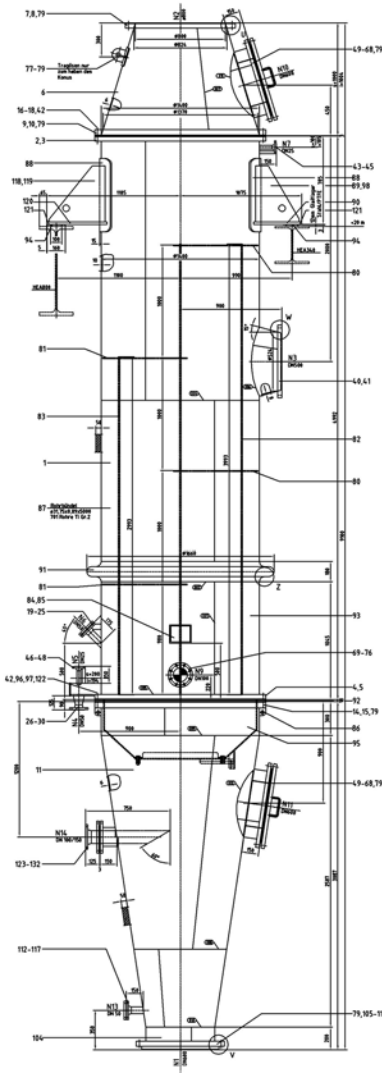
Detail-Engineering



- preparation of P & I diagrams
- preparation of equipment lists
- preparation of pipeline lists
- preparation of lists of fittings and valves
- preparation of list of measuring- and control systems as well electric systems
- measuring- and control engineering for complete plants
- preparation of specifications for machinery
- process- and mechanical properties and design of apparatus
- preparation of detail installation plans and determination of loads
- preparation of building drawings and steel structure drawings
- pipeline planning including isometric drawings

Apparatus

According to the slogan „individual service, best quality and reliability“



EBNER manufactures apparatus, heat exchangers as well as other components for different industries.

Our production area of approx. 6000 m² being equipped with all necessary machinery.

We treat all standard stainless steel such as:

AISI 304 / AISI 321 / AISI 316 TI / AISI 316 L / NO8904 / NO8926 / S31254 / ANSI 318 LN / NO8031 / AISI 314 and much more

as well as special materials

Hastelloy / Monel / Titanium / Graphite / Aluminium bronze

Apparatus



Separator and condensers for biodiesel units

Apparatus

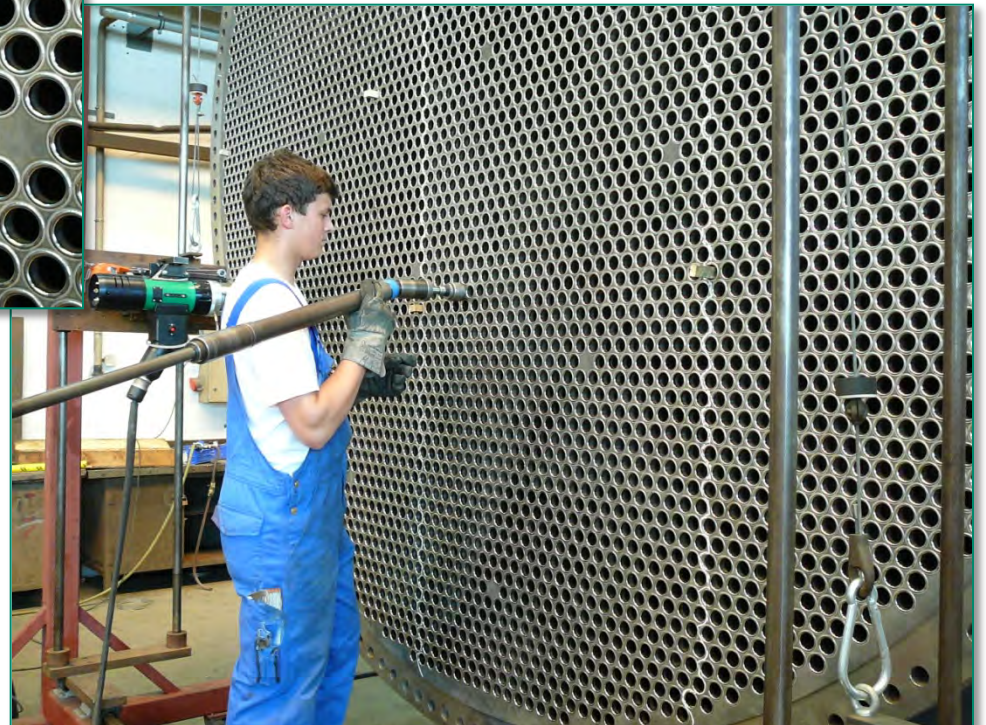


The biggest heatexchanger built by EBNER
Tubes: 5.712 titanium tubes 10.000 mm long
Diameter: 3.532 mm
Weight: approx. 60 t

Apparatus



Rolling of heat
exchanger tubes



Apparatus



Upper cone of heater
Diameter: 3.532 mm

Apparatus



Total view of the biggest heater built by EBNER
Tubes: 5.712 titanium tubes 10.000 mm long
Diameter: 3.532 mm
Weight: abt. 60 t

Apparatus



Heat exchanger in various materials such as Monel, Titanium, Graphite



Apparatus



Cone of biggest evaporator built by EBNER
The evaporator was completed – due to size – at site
Diameter: 6.400 mm length: 16000 mm

Apparatus



The biggest evaporator manufactured in the workshop in Eiterfeld
Diameter: 5.100 mm

Apparatus

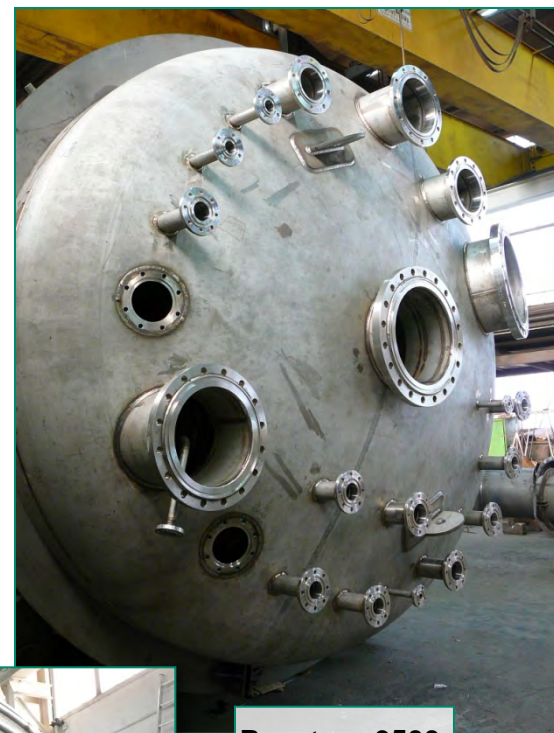


The longest column built by EBNER
Length: 41.000 mm

Apparatus



Flash evaporator



Reactor $\varnothing 3500$



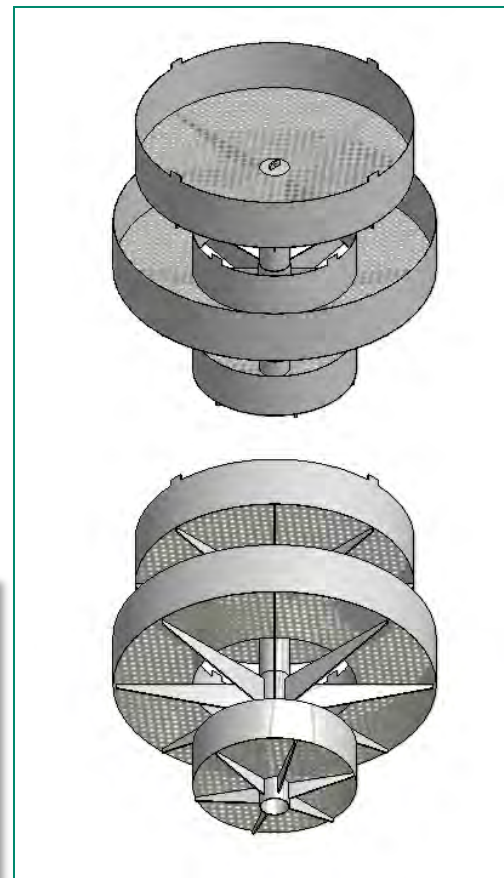
Agitation tank



Apparatus



Mixing condenser

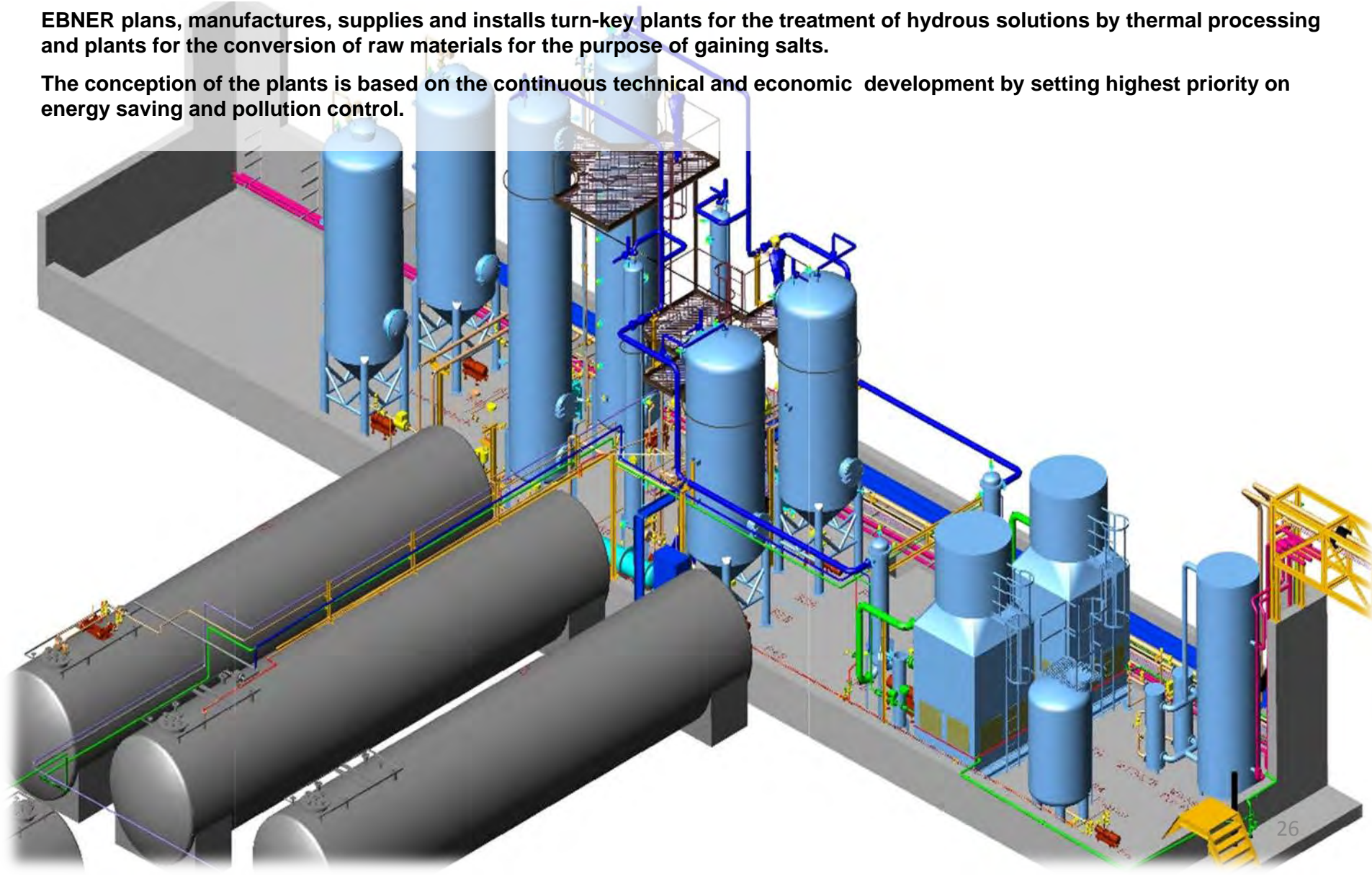


Sieve installations

Plants Construction

EBNER plans, manufactures, supplies and installs turn-key plants for the treatment of hydrous solutions by thermal processing and plants for the conversion of raw materials for the purpose of gaining salts.

The conception of the plants is based on the continuous technical and economic development by setting highest priority on energy saving and pollution control.



Plants Construction

Plants for

- degassing

- vaporizing

- crystallizing

- heat recovering

- heat exchanging

- condensing

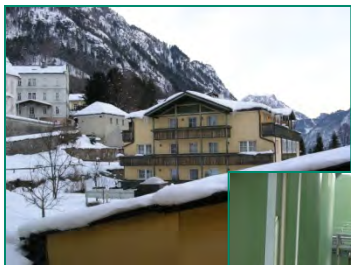
- vacuum producing

Complete plant systems which may be a combination of the above mentioned plants such as:

- salt recycling from process waste waters
- salt recycling from waste waters of flue gas desulphurization plants
- salt recycling from spinbaths
- extraction of salts from raw materials
- evaporation and crystallization of environmentally hazardous substances
- flaring of gases
- regeneration of pickling baths
- Mannheimer furnace (reaction crystallization)
- plants for glycerine concentration

Plants Construction

Birth and building of a plant



The location of the plant



The concrete work in progress



Pressure vessel fabrication



The transport



Progress of the steel structure



Installation of core equipment



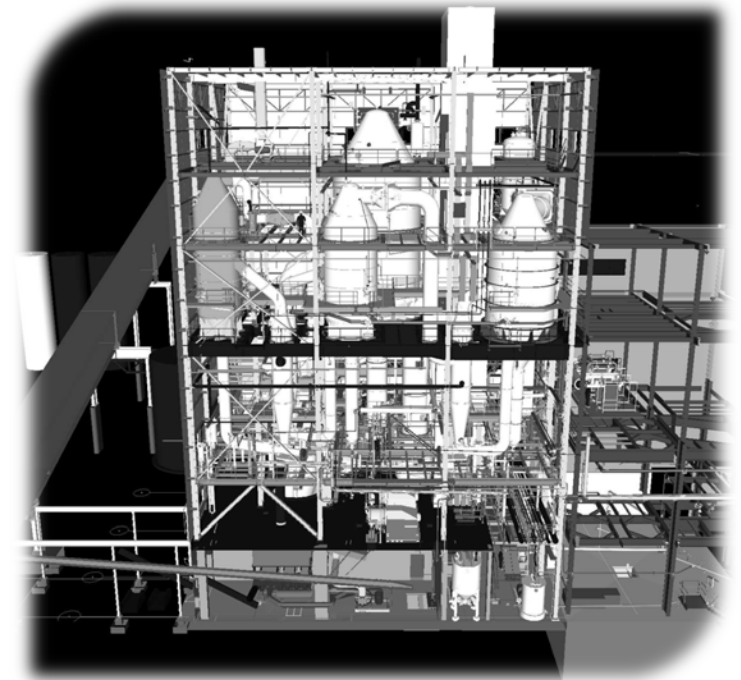
Difficult conditions for the erection due to frosty weather



Installation is nearly finished

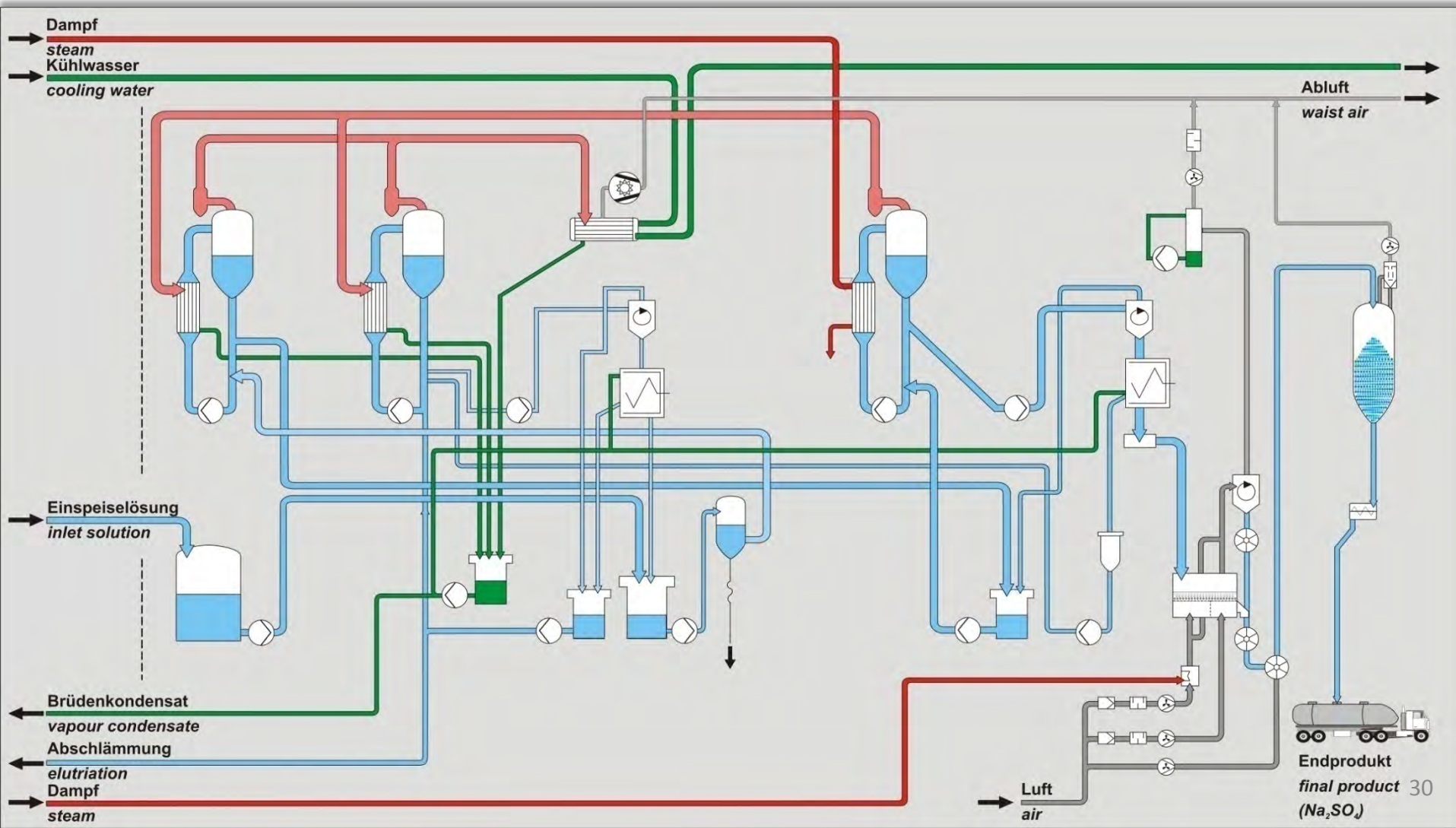
Plants Construction

Total view of the salt plant



Plants Construction

Process Flow Sheet - 3-stage salt recycling plant



Just one source.

Plants Construction



Vertical evaporators with vapour outlet

Plants Construction



Operation platform of the evaporators

Plants Construction



Centrifuge station

Plants Construction

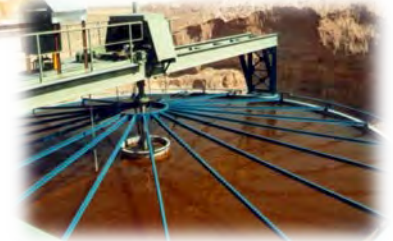
From desert sand to salt



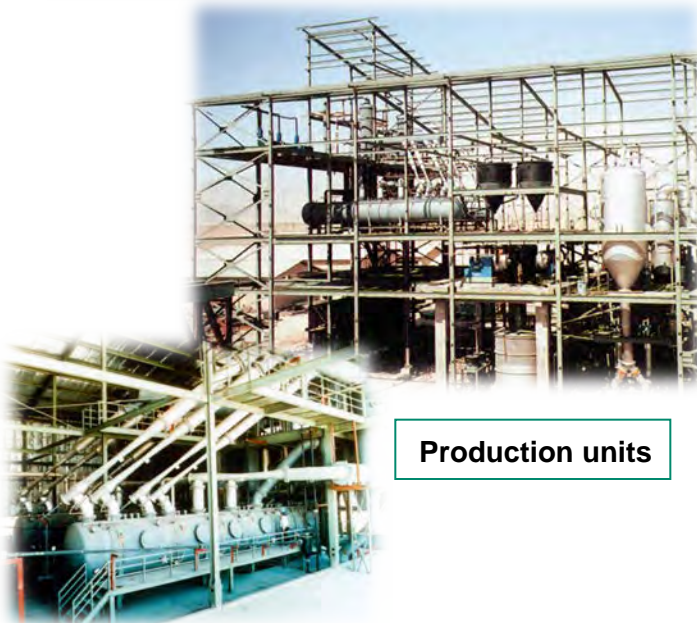
Exploitation and storage of the raw material



Sludge dissolving station



Feeding of raw material into the plant



Production units

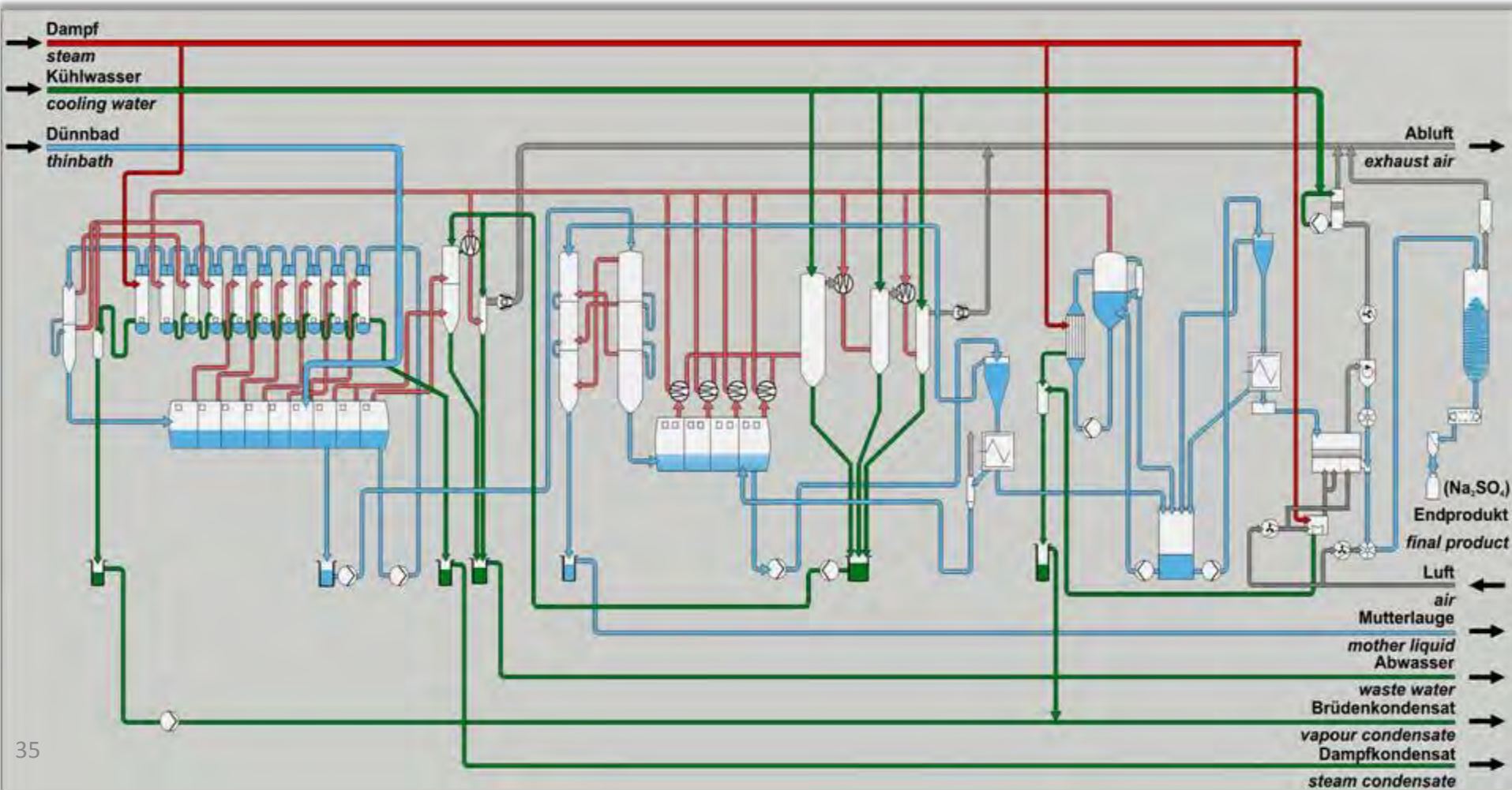


Final product



Plants Construction

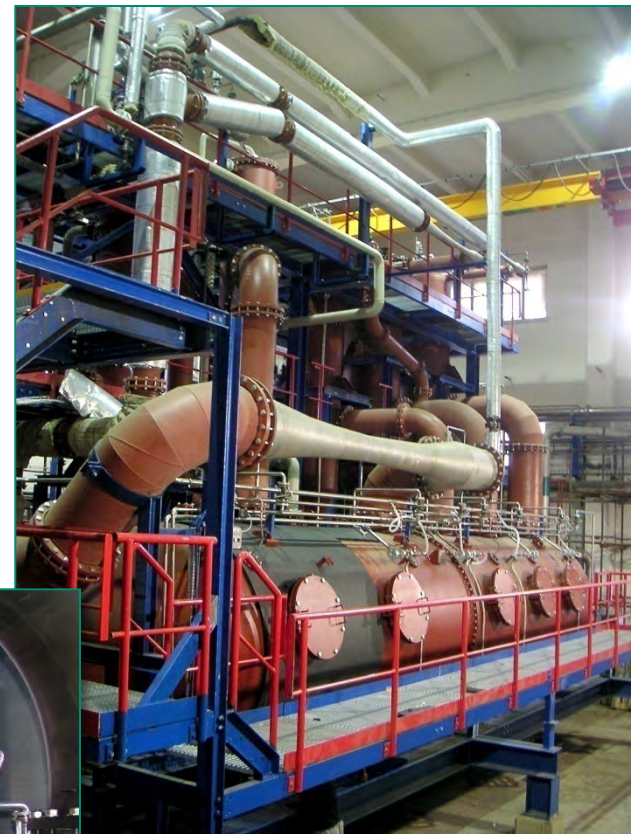
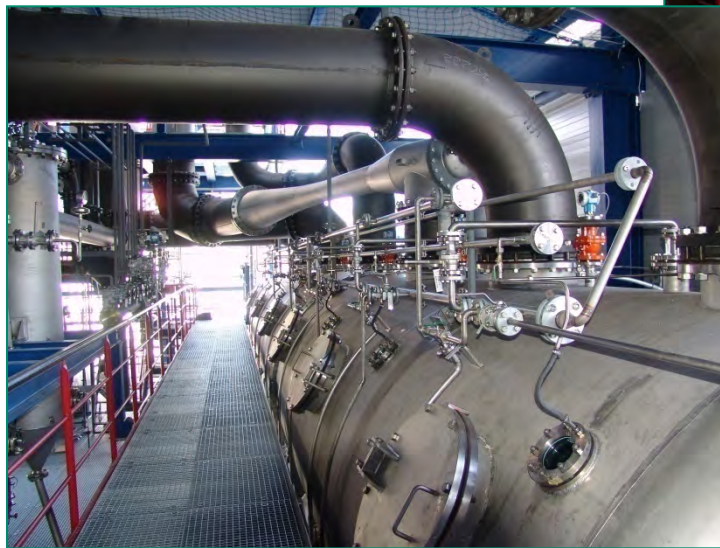
Process Flow Sheet - Spinbath regeneration



Plants Construction



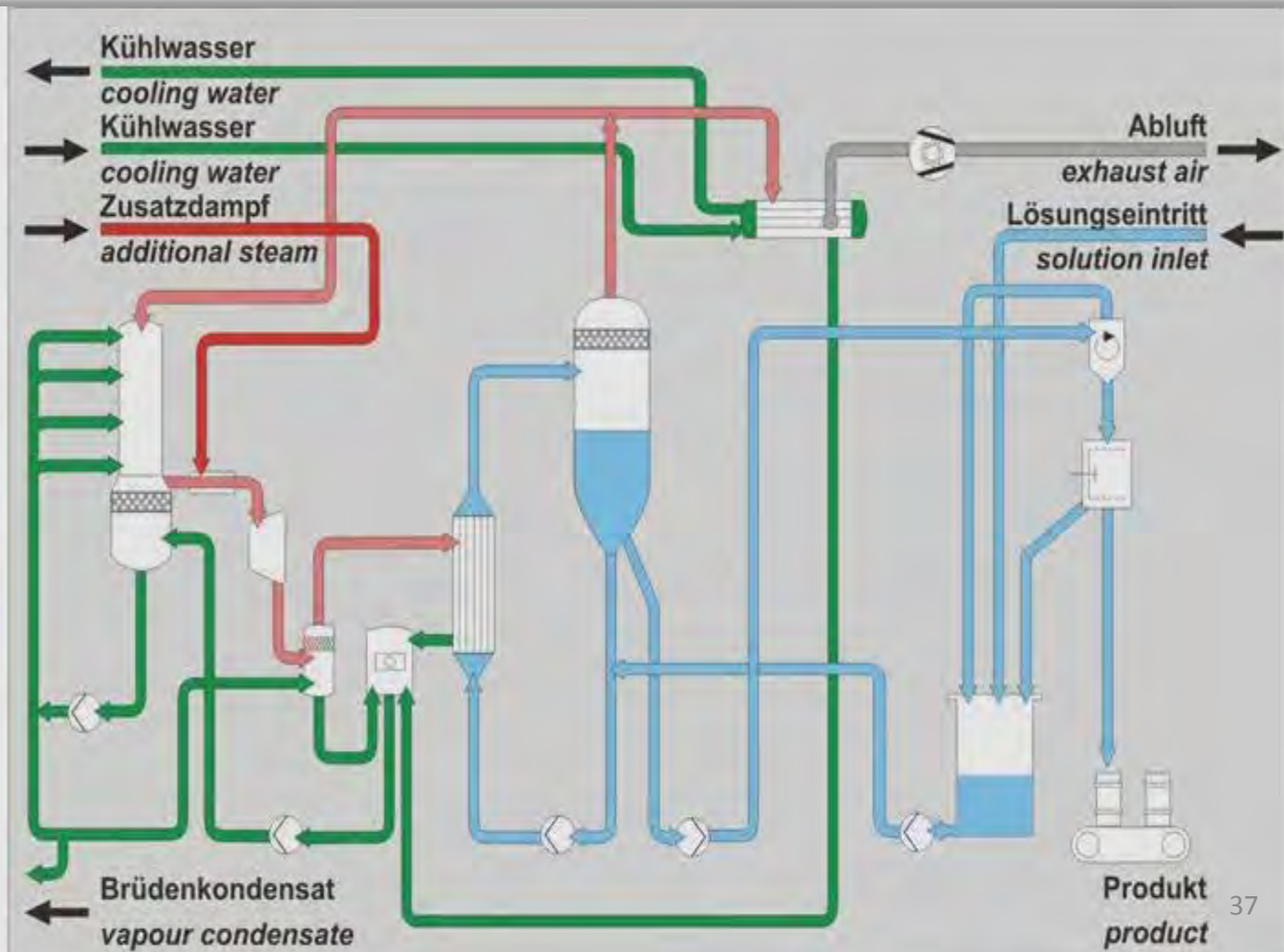
Flash evaporation plant



Crystallization plant

Plants Construction

Process Flow Sheet - Evaporation plant with mechanical vapour compression



Plants Construction



Evaporation plant



Erection

- For own plants
- For plants of competitors
- For related industrial enterprises



OUR ERECTION TEAM IS INTEGRATED IN OUR PRODUCTION SECTION AND BEING SELECTED DUE TO CUSTOMER NEEDS.

Erection

Various erection sites



Start-up and after-sales-service

Our start-up team not only puts our own plants into production but also makes this know-how available to other companies.



References

Degassed substances:

- Air
- H₂S
- CS₂
- CO₂
- SO₂

Evaporated substances:

- Aluminate liquor
- Aluminum sulphate solution
- Ammonium sulphate solution
- Ammonium rhodanide solution
- Black liquor
- Calcium chloride solution
- Caprolactam
- Cellophane bath
- Filament fiber spinbath
- Glycerin-water mixture
- Iron sulphate solution
- Kerosene-oil mixture
- Mixed bath
- Normal fiber spinbath
- Oil mixtures
- Pickling baths
- Polynosic fiber spinbath
- Caustic potash
- Potash magnesia solution
- Radioactive contaminated waste water
- Saline waste water
- Sodium carbonate solution
- Sodium chloride solution
- Sodium sulphate solution
- Sodium sulfite solution
- Special fiber spinbath
- Titanium dioxide solution
- Waste water
- Wolframate solution
- Zinc chloride solution

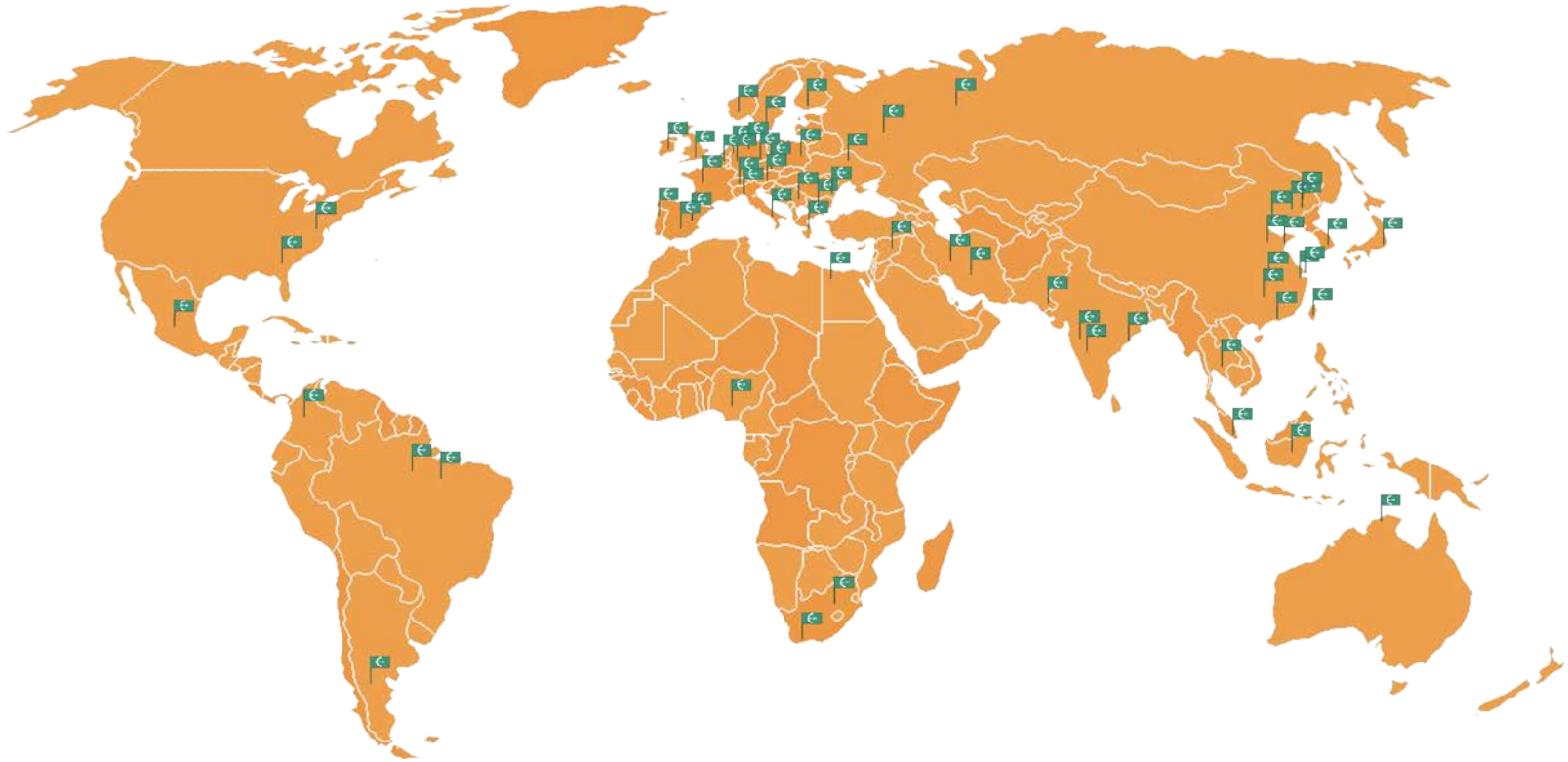
References

Crystallized substances:

- Ammonium chloride
- Ammonium sulphate
- Carnalite
- Glaubers´salt
- Glaserite
- Hexamethylentetramin
- Iron sulfate heptahydrate
- Magnesium sulphate
- Magnesium sulphate heptahydrate
- Metal salt
- Mixed salt
- Nickel sulphate
- Nickel sulphate hexahydrate
- Organic salts
- Potassium chloride
- Potassium sulphate
- Sodium carbonate
- Sodium chloride
- Sodium rhodanide
- Sodium sulphate
- Sodium sulfite
- Sodium thiocyanate
- Strontium nitrate
- Thiourea
- Wolframate salt
- Zinc sulphate heptahydrate

References

Countries we deliver to:



Australia
Austria
Belgium
Brazil
Bulgaria
China, P.R.
Colombia

Czech Republic
Egypt
Finland
France
Germany
Great Britain
Greece

India
Indonesia
Iran
Ireland
Italy
Malaysia
Mexico

Netherlands
Nigeria
Norway
Pakistan
Poland
Portugal
Romania

Russia
South Africa
South Korea
Spain
Sweden
Switzerland
Syria

Taiwan
Thailand
Ukraine
USA
Yugoslavia



Just one source.

E= ebner
engineering | manufacturing | establishing

contact

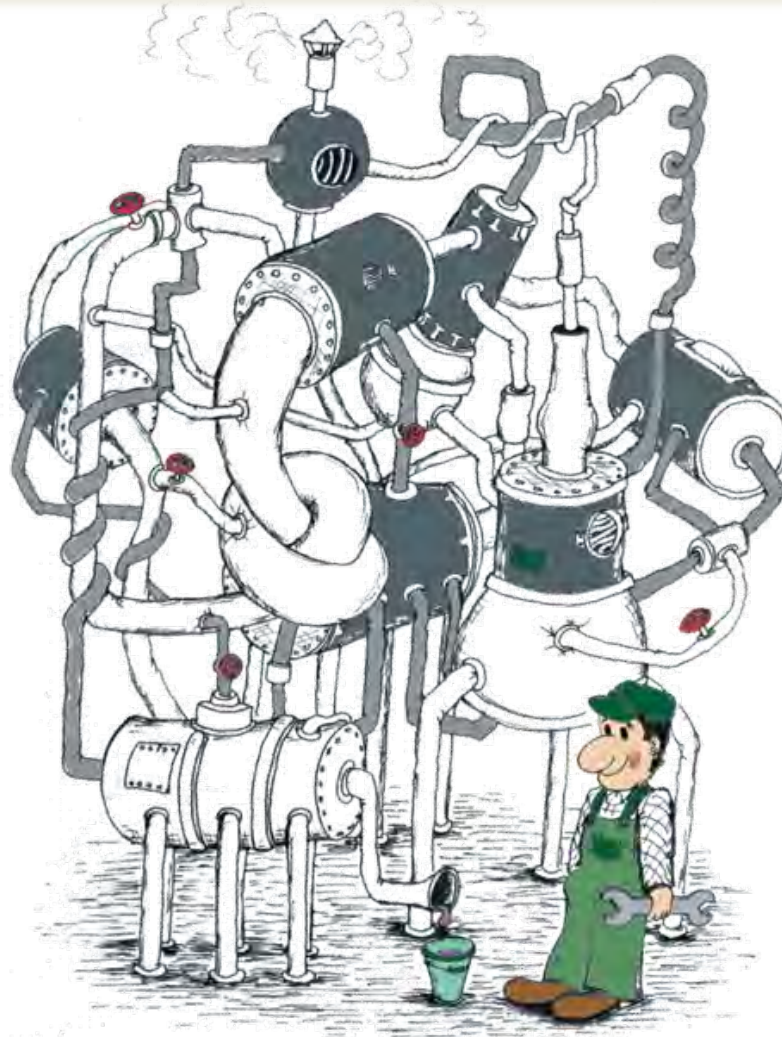
We would be pleased you contact us

Ebner GmbH & Co. KG **Plants and apparatus**

Karl-Ebner-Straße 8
D-36132 Eiterfeld

Phone: +49 (0)6672 890 0
Telefax: +49 (0)6672 890 133
E-Mail: info@ebner-co.de
Internet: www.ebner-co.de

Thank you for your attention Thank you for your attention



To avoid this, get involved with us